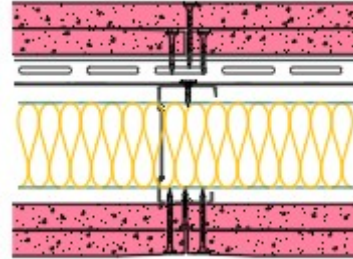


RB70-S-62(50) - SPEEDLINE System Data Sheet - Version V1 (24-10-23)

SPEEDLINE 70mm 'C' Stud Partition with Resbar
@600mm Ctrs, with 2x Siniat GTEC 15mm Fire
Board each side, 50mm APR



System Performance Breakdown

Fire Resistance:

BS476 Part 22:1987:

Test Ref & Date or Applied Ref & Report:

Max Height:

Thickness:

Duty Grade: BS 5234: Part 2:1992:

Sound Insulation:

120/120 Minutes (Integrity/Insulation).

BTC 17593FA - BRE Report P102396-1011C

Refer to Speedline Specification Clause

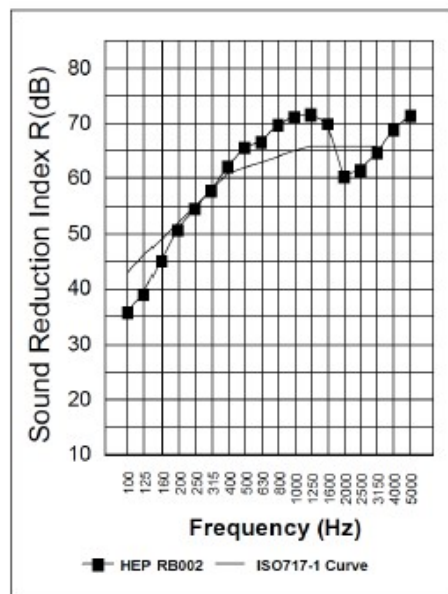
148 mm. (At Base Track, Excluding Finishes)

Severe - Annexes A-F

62 R_wdB-9Ctr, Date Tested or Assessed Against - RB70-S-62(50)

Sound Insulation

Freq.(Hz)	R(dB)
100	35.9
125	39.1
160	45.2
200	50.8
250	54.8
315	58.0
400	62.3
500	65.8
630	66.8
800	69.7
1000	71.4
1250	71.8
1600	70.0
2000	60.6
2500	61.7
3150	64.9
4000	68.9
5000	71.5
R_w	62
R_w + C_{tr}	53



TESTED AT ONE OF THE UKAS
ACCREDITED LABORATORIES
BELOW

B.T.C
(H-Ref on Graph)



B.R.E



AIRO



S.R.L

